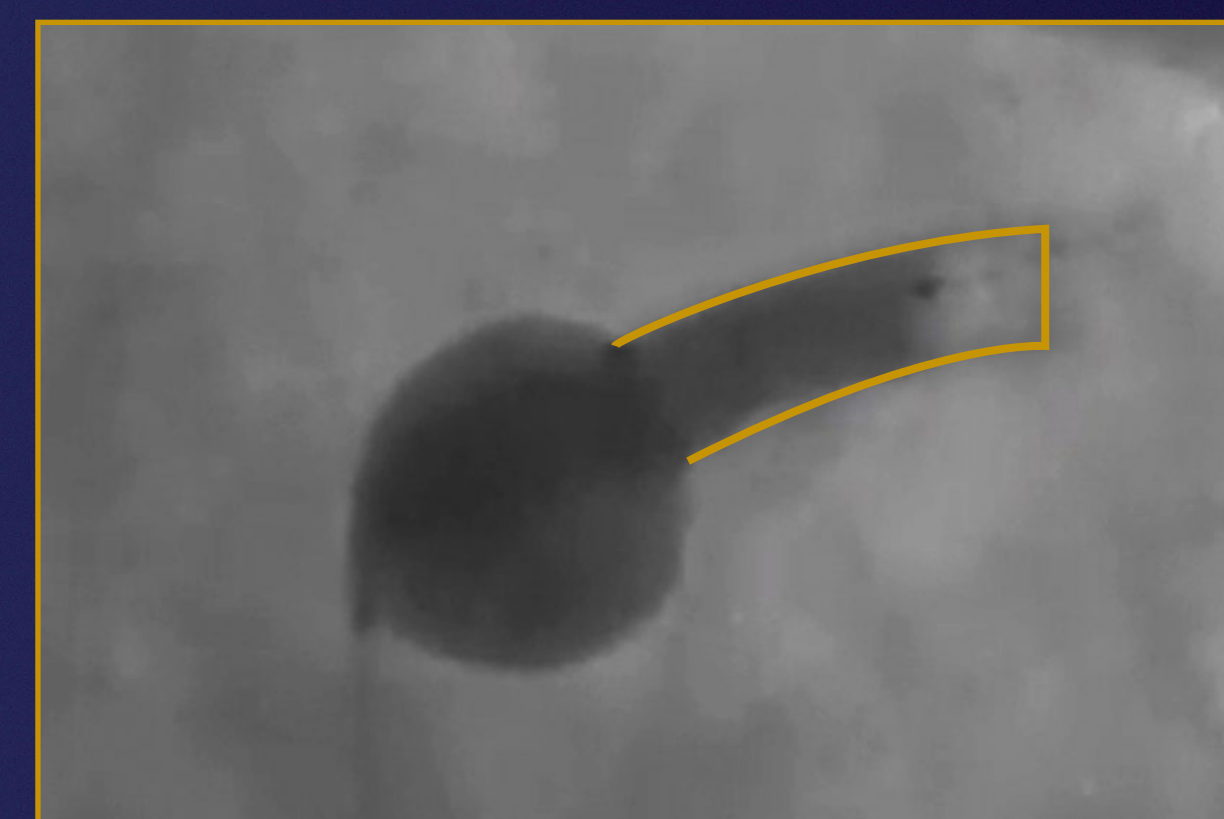
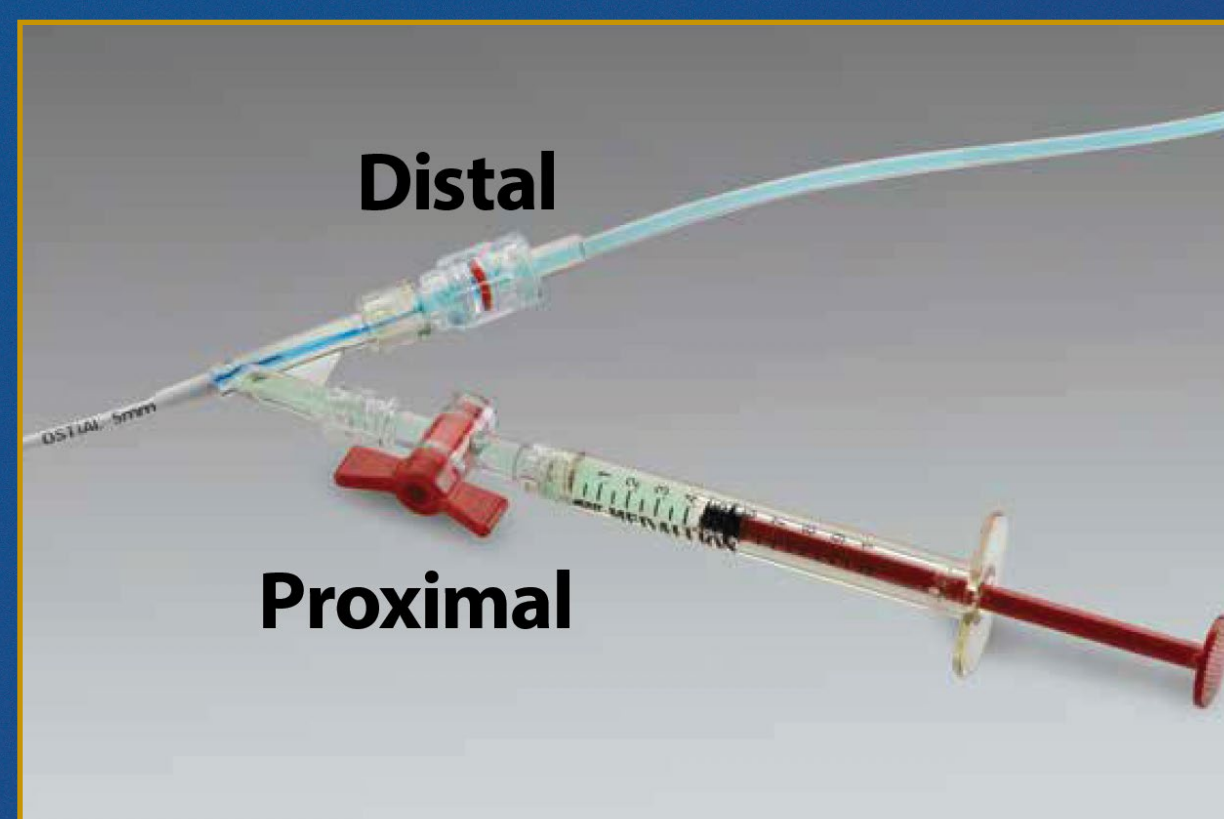
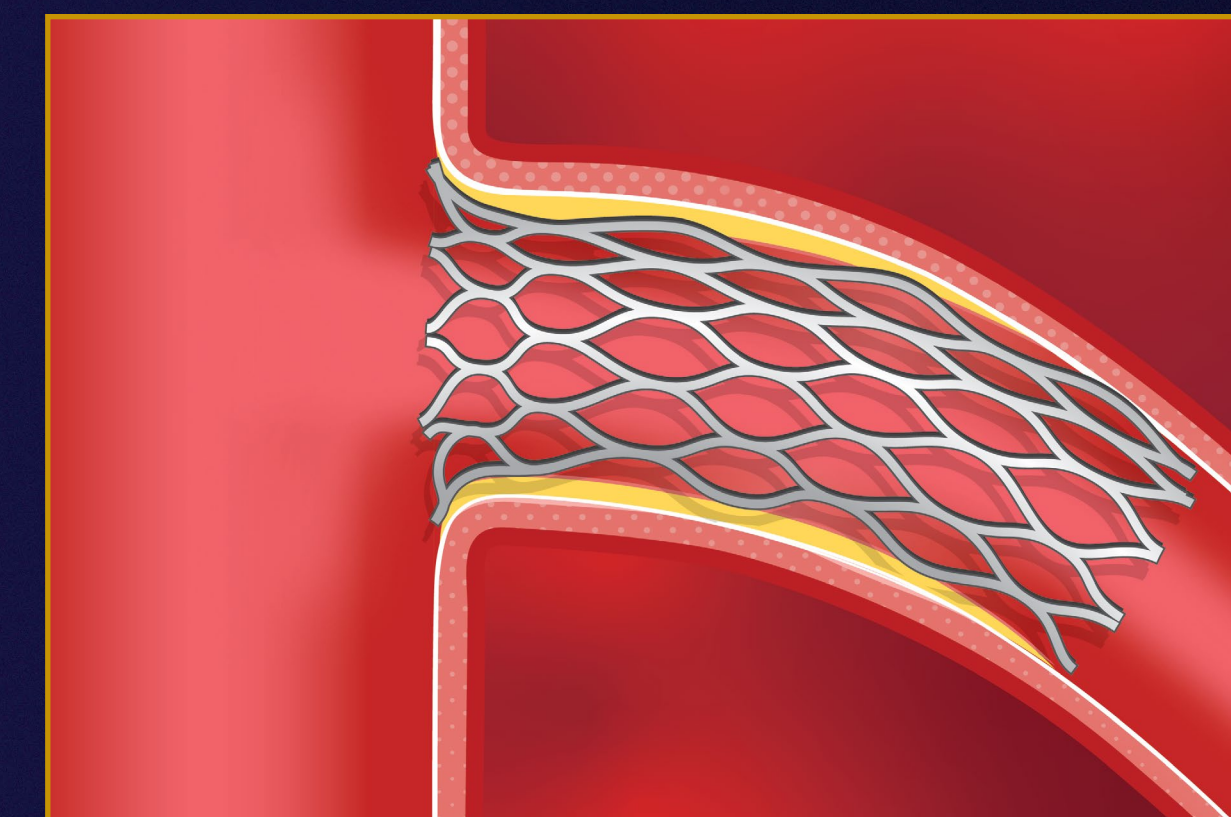
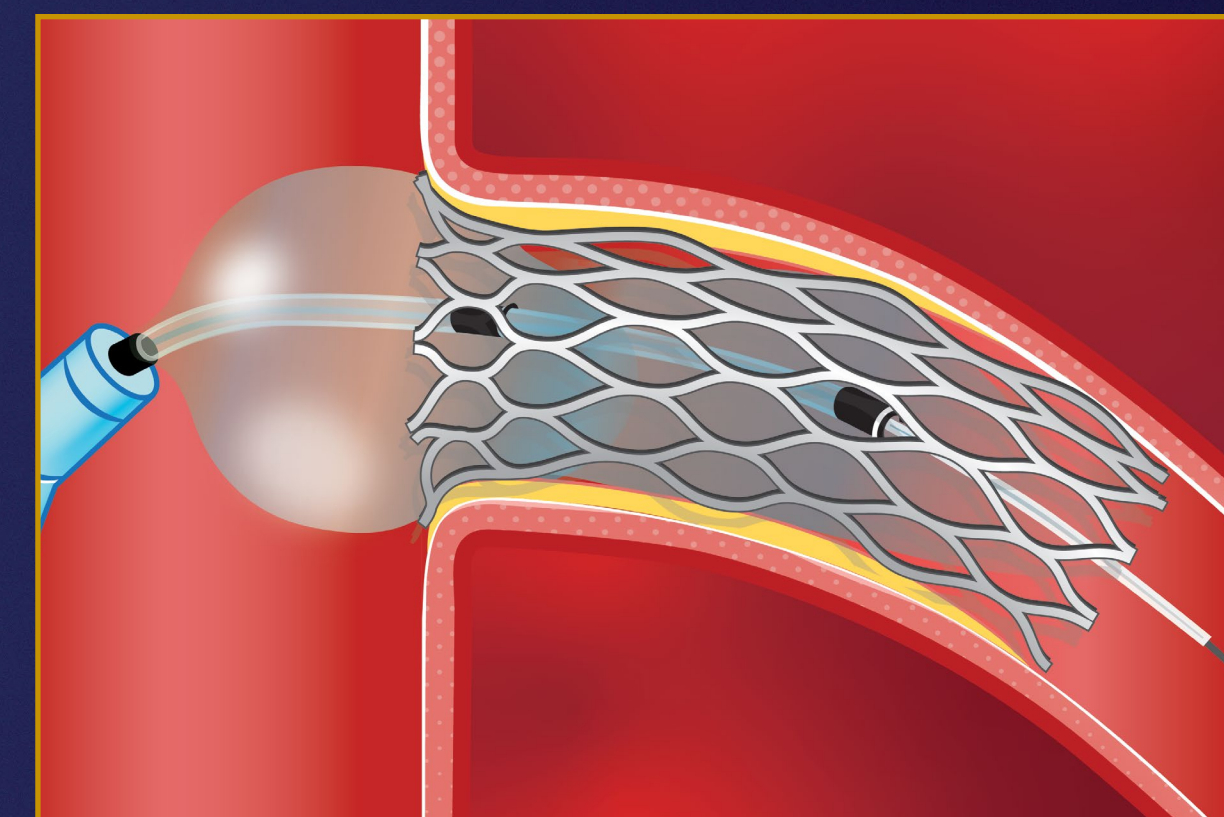
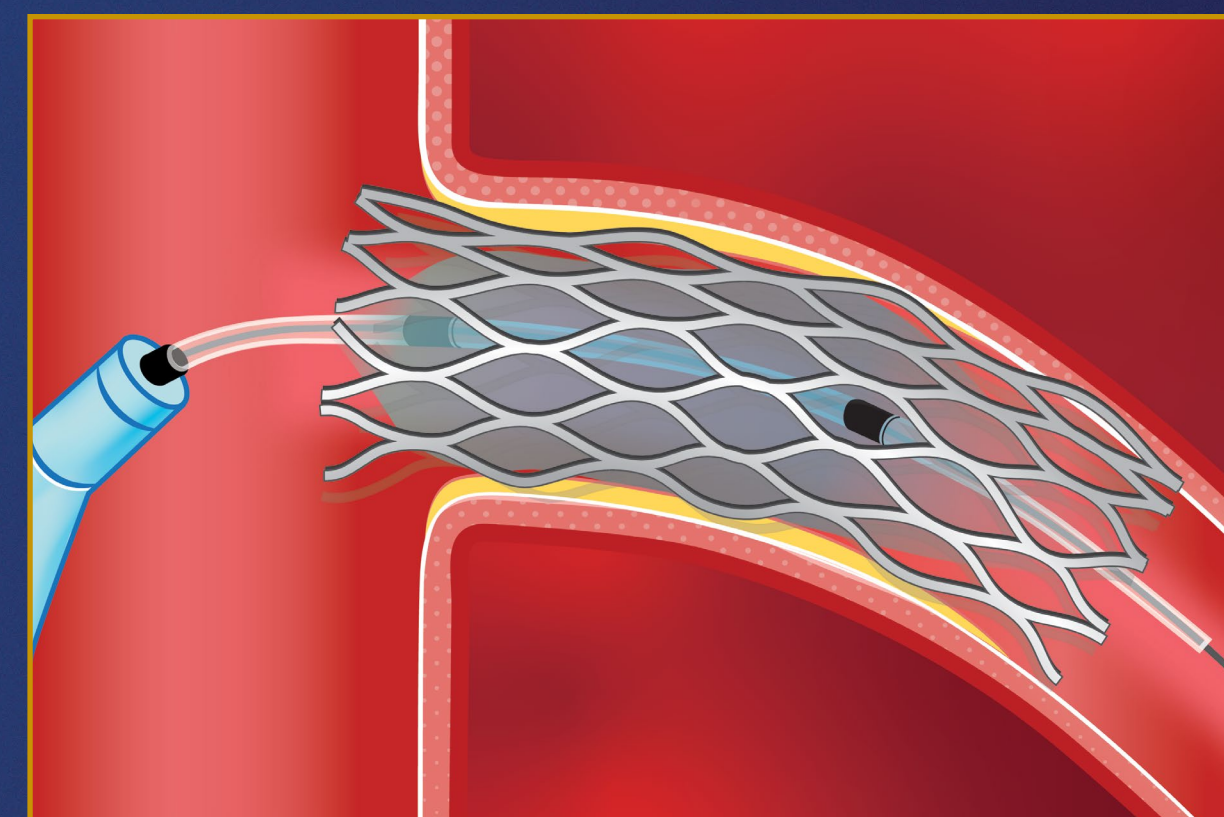
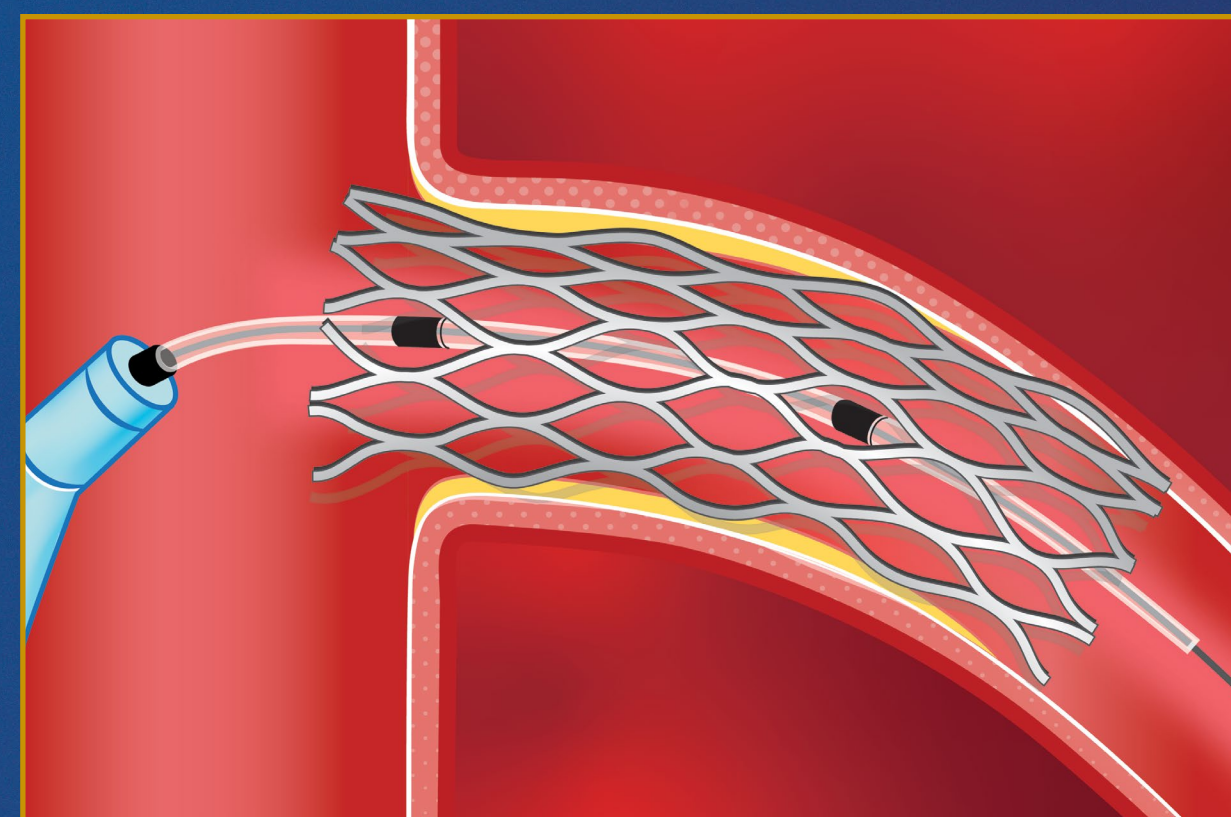
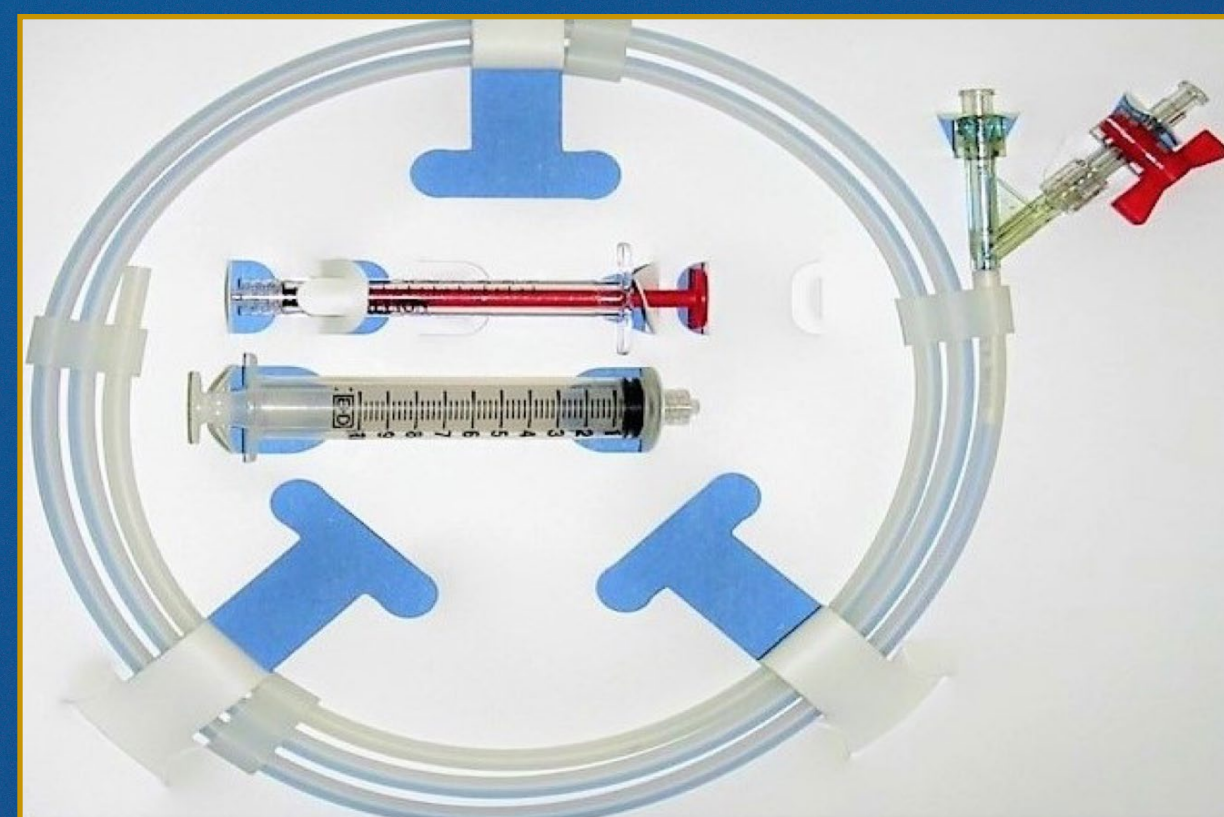
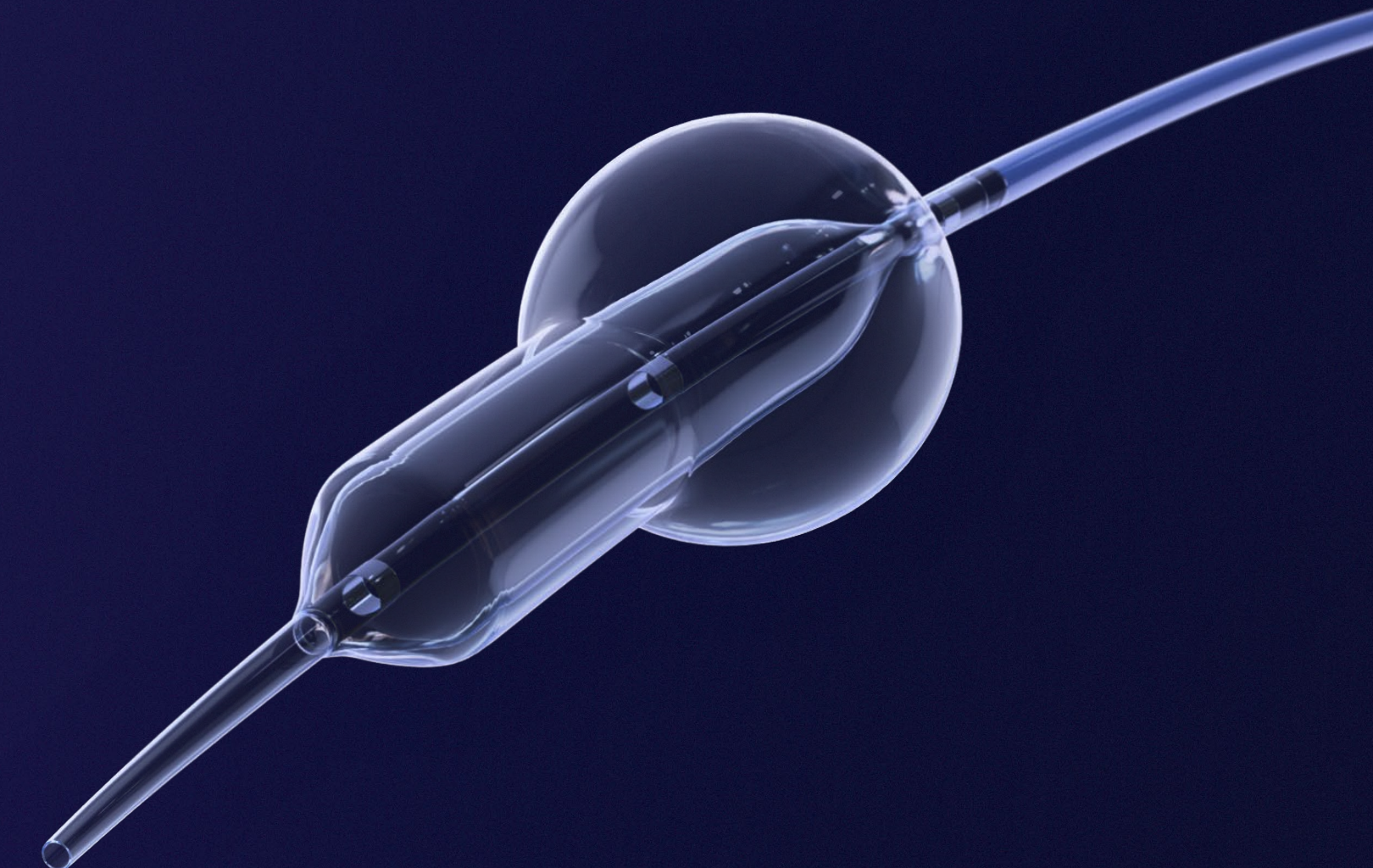


# Ostial FLASH™

Aorto-Ostial Angioplasty System

## TRUE 360°



### PREP THE DEVICE

**Proximal Balloon:** Prep and purge using an indeflator or 10 cc aspiration syringe, then attach the 1 cc syringe (red), filled with the required amount of diluted contrast.

**Distal Balloon:** Use an indeflator to prep, same as a regular angioplasty balloon.

### ALIGN MARKERS

**Mid-marker:** At the ostium (placed 2 mm distal to the proximal edge of the stent).

**Distal marker:** At least 2–3 mm within the stent. **Never beyond the distal edge of the stent.**

**Proximal marker:** In the aorta, outside the guide catheter.

### INFLATE DISTAL BALLOON

Inflate the distal balloon with an indeflator to the desired pressure.

(The distal balloon requires high pressure and is specially designed for stent post-dilatation).

### INFLATE PROXIMAL BALLOON

Before inflation of the proximal balloon, make sure the distal marker has not moved and is inside the stent; then using diluted contrast, inflate the proximal balloon using the red 1 cc inflation syringe.

**Inflation volume:**

FLASH™ = 1 cc

FLASH™ Mini = 0.4 cc

### TRUE 360° RESULT

Deflate the proximal balloon with the 10 cc aspiration syringe and deflate the distal balloon with the indeflator. Then withdraw the FLASH System.



Play FLASH  
Training Video